
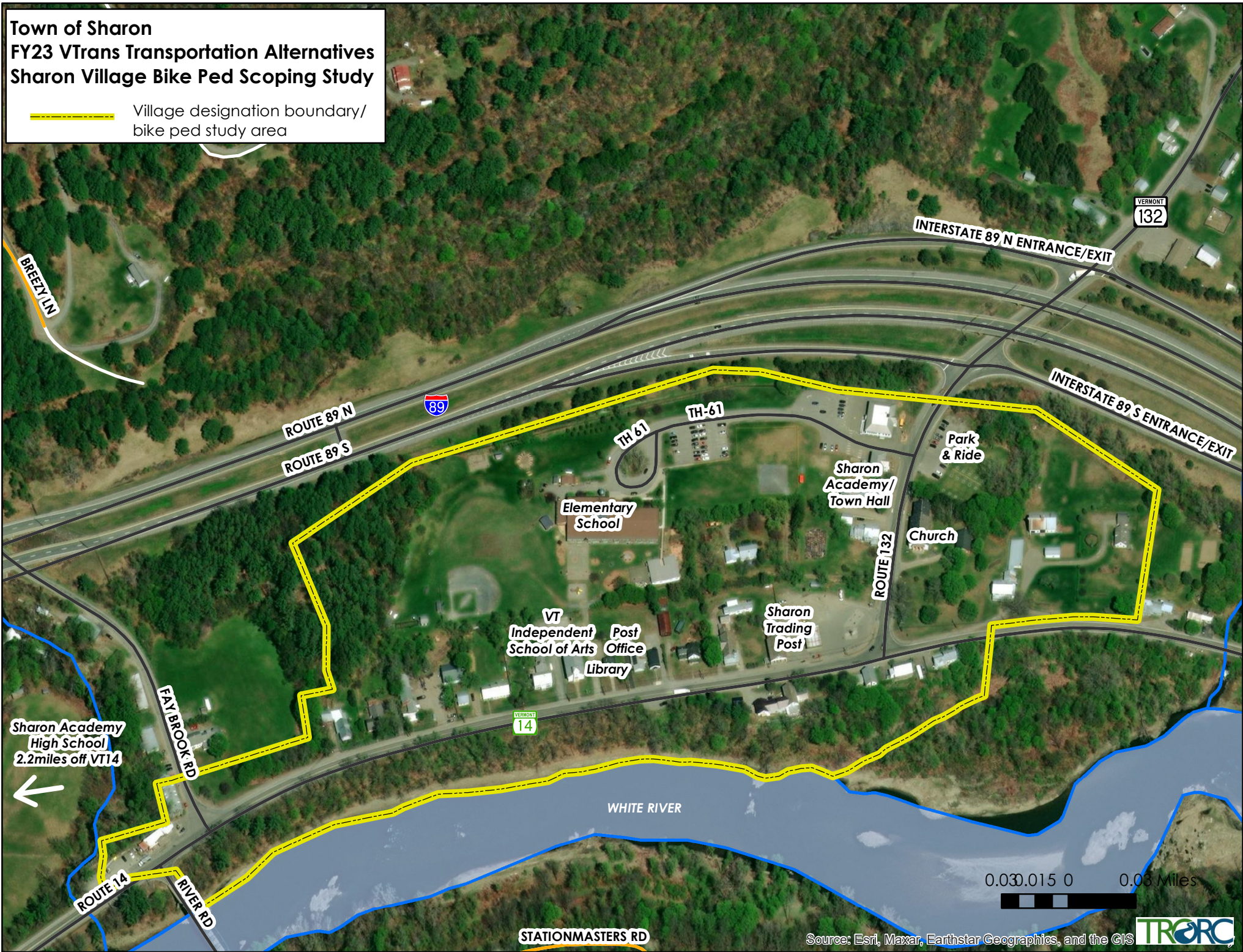


Town of Sharon
FY23 VTrans Transportation Alternatives
Sharon Village Bike Ped Scoping Study

 Village designation boundary/
bike ped study area



Village Designation

Sharon, Vermont

Designated July 25, 2005
by the VT Downtown Board

| Building | Map ID |
|---|--------|
| Donahue/Gibson house | 1 |
| Old Town Hall/Sharon Congregational Church | 2 |
| Sharon Academy/Sharon Town Office/Masonic Hall | 3 |
| Lighthouse | 4 |
| Apartment Building | 5 |
| Sharon Trading Post | 6 |
| Apartment Building | 7 |
| Sharon Post Office | 8 |
| Baxter Library | 9 |
| Seven Stars Center - Vermont Independent School of the Arts | 10 |
| Apartment Building | 11 |
| Twin State Roofing | 12 |
| Midway Station | 13 |
| Midway Station | 13 |
| Sharon Elementary School | 14 |
| The Columns/Columns Gift Shop | 15 |
| Sharon Trading Post Parking Lot | 16 |
| Apartment Building | 17 |

Property Uses

- Commercial
- Multi-Unit Housing
- Public/Civic
- Residential

Village Designation Boundary

1:2,400

1 inch equals 200 feet

- VT route/TH cls 1
- TH cls 2
- TH cls 2 gravel
- TH cls 3
- TH cls 3 gravel
- TH cls 4
- trail
- private
- US route
- US interstate
- VT forest hwy



POLITICAL BOUNDARIES: Town Parcel Boundaries, VCGI, 2003.
ROADS: 1:5000 Digital Road Centerline Project, VACT, 1991-1994 & E911 Board GPS Updates, 2003.
STRUCTURES: E911 Board GPS Updates, 2003.
SURFACE WATER: On-screen digitized from 1:5000 digital orthophotos using USGS 7 1/2' quadrangles and 1:20000 color infrared aerial photography as additional source material, VCGI for VHD-USGS, 2003.



State Plane Meters, NAD 83

GIS

for info & data
www.vcgi.org

For planning purposes only.
Not for regulatory interpretation.



TWO RIVERS-OTTAUQUECHEE

REGIONAL COMMISSION

GIS Service Center

3117 Rose Hill
The King Farm
Woodstock, VT 05091
802-457-3188

www.trorc.org

Sharon Park and Ride Alternative 1A: Upgrade Existing Site with Bus Turnaround



